

A clean cut through reinforced concrete

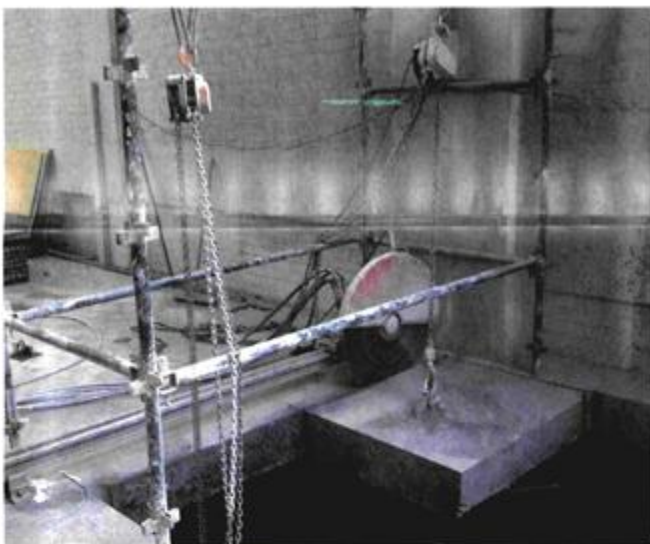
The new range of Arix wall saw diamond blades from Diamond Products simplifies the costly and time-consuming task of heavy-duty concrete cutting.

A specialist in the manufacture, assembly and sale of diamond tools and equipment for heavy industries, Diamond Products developed the Arix wall saw diamond blades to make it easier to cut through steel-reinforced concrete, quickly.

Darryl Gray, a director of the company, says, "The wall saw blades are manufactured using the internationally renowned Arix technology – a process of controlled deposition of diamonds onto a substrate at predetermined positions. This ensures that diamond grits are placed with precision into three-dimensional patterns on the blades so that they achieve maximum performance in heavy-duty construction applications.

"Arix technology has been proven to increase the lifespan of diamond tools by 400%, while achieving cutting speeds of twice the industry standard," Gray adds.

Specialist concrete core drilling and wall sawing expert, GA Cut Core, made use of the 800mm



Precision manufacturing technology makes Diamond Products' Arix wall saw blades top performers in cutting through reinforced concrete.

Arix blade supplied by Diamond Products in a project last year. It was commissioned by one of the big banks to cut through the basement walls at its Johannesburg headquarters in order to make room for new generators to be installed.

GA Cut Core owner Anton Nel points out that the Arix wall saw blade was the only product that could meet the demands of cutting through the high-strength basement walls. "This particular job could not be done with industry-standard blades, which placed the cutting machine under extreme pressure and wore out before the wall had been fully cut. The Arix blade, however, was able to cut through the concrete quickly and effectively within a matter of days."

Nel says that the Arix blade was fitted to a 15kW wall saw. "Despite the steel reinforcement in the walls, the Arix blades provided a

consistent cut and the wall saw could run at lower pressure, which reduces maintenance significantly."

Gray highlights that the alignment of diamonds in separate rows on the blade ensures that each diamond carries precisely the same workload. "This extends the lifespan of the tool and allows for quicker and more accurate cutting."

In another recent project industrial cutting and coring company, Core Connection, made use of an 800mm Arix blade to cut concrete columns in an upgrading project at Johannesburg's Rosebank Mall. Owner of the company, Mark van Zyl, says that they had tried using industry-standard blades but it was the Arix wall saw blade that enabled Core Connection to complete the project.

Diamond Products
T +27 (0)11 552 8310