



## AGE® POWER TOOLS



Tel: 0861 75 75 75  
Tel: +27 (0) 11 552-8310 int  
Fax: +27 (0) 11 552 8312  
E-mail: [info@diamondpc.co.za](mailto:info@diamondpc.co.za)  
Web: [www.diamondpc.co.za](http://www.diamondpc.co.za)

Tel: 0861 75 75 75  
Tel: +27 (0) 11 552-8310 int  
Fax: +27 (0) 11 552 8312  
E-mail: [info@diamondpc.co.za](mailto:info@diamondpc.co.za)  
Web: [www.diamondpc.co.za](http://www.diamondpc.co.za)

**CS180**  
**WALL CHASER**

A 180mm wall chaser with 52mm depth of cut and 51mm maximum channel width. 1800W motor with overload protection.



**BH92**  
**ROTARY BUSH HAMMER**

This Rotary Bush hammer is designed for texturing and roughening of smooth stone surfaces. This is especially important for performing operations to create anti-slip surfaces on stone floors and steps.

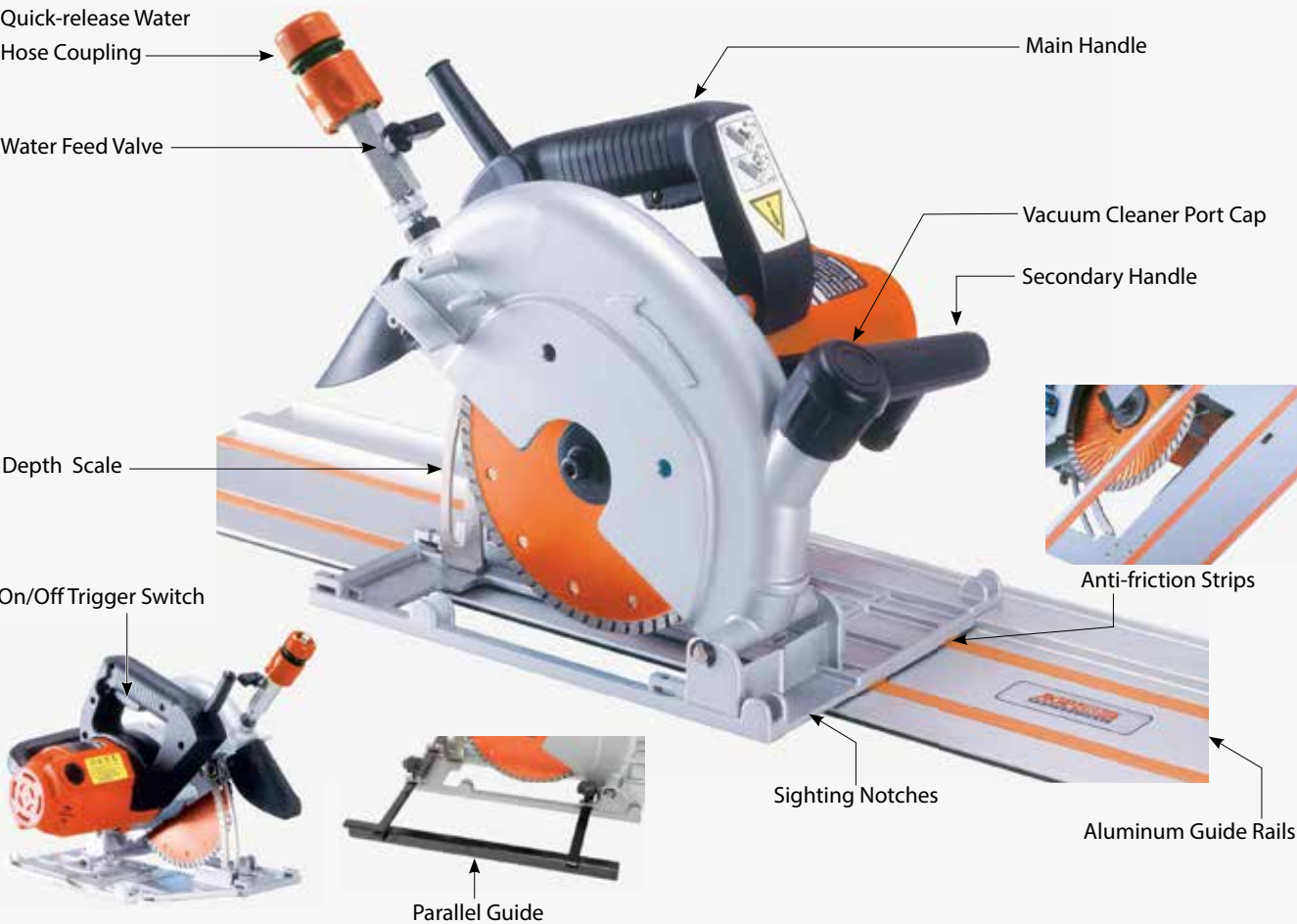


\* Due to the constant speed design, the no load and the rated load speeds are roughly the same.



SCS7  
STONE CUTTING  
CIRCULAR SAW

A 180mm wet stone saw with 55mm depth of cut and 1800W motor. Use the optional guide rail for precise control.



OPTIONAL ACCESSORIES:

■ Aluminum Guide Rails	Spec.
Guide Rail	174mm x 1400mm
Guide Rail	174mm x 800mm



The guide rail allows perfectly straight cuts and the cut-to-fit rubber strip shows the operator exactly where the cutting line will be.



Guide Rail Connector  
0299-0106-00000-001



Lever Clamp  
305-00179-000-001



Plastic Carry Case  
455mm x 333mm x 375mm  
0299-0075-00100-012



STANDARD ACCESSORIES

- \* Rubber Plug x1
- \* Parallel Guide x1
- \* Quick-release Water Hose Coupling x1
- \* M6 L-Hex Wrench x1
- \* PRCD / GFCI Interruptor x1

OPTIONAL ACCESSORIES

- \* 7" Diamond Blade x1

G125  
CONCRETE GRINDER

125mm, high endurance concrete grinder with excellent dust control



Model	G125
Power Input	2200W (220V), 1700W (110V)
Voltage, Frequency	220-240V~ 50-60Hz or 110-120V~ 50-60Hz
No Load/min <sup>-1</sup>	4300 - 7200
Wheel Diameter	125mm (5")
Arbor	22.23mm (7/8") & 25.4 (1") (Double-Sided)
Spindle	M14 or 5/8-11 (Specify when ordering)
Dimensions (LxWxH)	500mm x 195mm x 175mm
Weight	4.7kg (10.3Lbs)

STANDARD ACCESSORIES

- \* Lock Nut Wrench
- \* Face Spanner Wrench
- \* Hex Key M6

OPTIONAL ACCESSORIES

- \* Various Grits of Diamond Cup Wheel

SM7  
CONCRETE GRINDER

180mm, compact and high endurance concrete grinder with excellent dust control.



OPTIONAL ACCESSORIES:



Model	SM7
Power Input	2200W (220V), 1700W (110V)
Voltage	220-240V~ 50/60Hz or 110-120V~ 50/60Hz
* No Load/min <sup>-1</sup>	3200 - 6500
Wheel Diameter	180mm (7")
Arbor	22.23mm (7/8") or 25.4 (1") ( Specify when ordering)
Spindle	M14 or 5/8-11 ( Specify when ordering)
Soft Start & Overload Protection	With
Dimensions (LxWxH)	246mm x 280mm x 325mm
Weight	5.74kg (12.62 Lbs)

\* Due to the constant speed design, the no load and the rated load speeds are roughly the same.

EV32 - 105mm  
EV42 - 120mm  
ELECTRIC MIXERS

EV52 - 140mm  
EV160 - 160mm

Electric mixers with revolutionary ergonomic design and sturdy mechanicals.





DM52P & DM52D  
DRY / WET DIAMOND  
CORE DRILL MOTOR

light, high efficiency 1800W, 2 speed motors for dry drilling up to 182mm and occasional wet drilling up to 80mm.

Pistol-Handle Model (DM52P )



D-Handle Model (DM52D )



Model	DM52P	DM52D
Power Input	1800W	
Voltage	220-240V~ 50/60Hz or 110-120V~ 50/60Hz	
No Load /Full Load min <sup>-1</sup>	Speed 1	1800 / 1080
	Speed 2	3600 / 2160
Percussion Frequency (optional)	Speed 1	29,000 bpm
	Speed 2	56,000 bpm
Spindle Thread	1-1/4" UNC male & 1/2" BSP female or 1/2" BSP female (w/water feed) or M18-2.5 male (dry) (Specify when ordering)	
Capacity-Dry	182mm (7-1/4")	
Capacity-Wet	82mm (3-1/4")	
Soft Start & Overload Protection	With	
Mechanical Safety Clutch	With	
Protection Class	Class II with PRCD / GFCI	
Dimensions (LxWxH)	450mm x 105mm x 280mm	505mm x 105mm x 210mm
Neck Diameter	60mm	60mm
Net Weight	4.9kg (10.8 Lbs)	5.0kg (11.0 Lbs)

STANDARD ACCESSORIES

- \* Side Handle x1
- \* Water Feed Adaptor Head x1
- \* Vacuum Adaptor Head x1
- \* Percussion Selector (Only for Dry Drilling Mode) x1
- \* PRCD / GFCI Interrupter x1

OPTIONAL ACCESSORIES

- \* Soft-Grip Side Handle x1
- \* SDS Pilot Drill Socket x1
- \* Centering Pilot for L 450mm Bits
- \* Centering Pilot for L 300mm Bits

C16  
CONCRETE SAW

405mm handheld wet or dry concrete saw with 3200W motor for up to 150mm depth of cut. Ideal for in-door cutting.

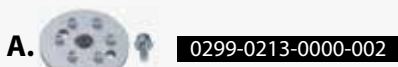


Flush Cutting Kit (optional)

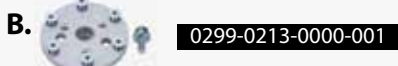
The optional quick-change Flush Cutting Kit, once mounted with a suitable flush cutting blade, makes it easy to switch between standard cutting and flush cutting. All that's needed is to switch the water tube to the alternate water nozzle and open the 3 toggle latches. The latches have keepers to prevent rattling. We have 2 configurations available: a 60mm six-bolt flange or a flange with a combination of 1" Longyear six-bolt and Cardi three-bolt patterns. Each kit comes complete with the flange, special arbor screw with washer, 6 flat head screws, and M5 & M8 L-hex wrenches.

Flush Cutting Kit

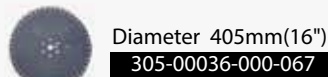
A. HY Pattern Flush Cutting Kit- 1" arbor 6-bolt (60mm bolt hole circle)



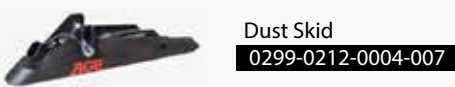
B. HV Pattern Flush Cutting Kit- 1" arbor Longyear 6-bolt (3-1/2" (88.9mm) bolt hole circle) & 3 bolt combined



Flush Cutting Blade - 88.9mm bolt hole circle (for use with the B. HV Pattern Flush Cutting Kit above)



Dust Skid (Optional) with spring-loaded suspension for ideal dust containment when dry cutting



Model	C16
Power Input	220V: 2700W (certificate), 3200W (actual) 110V: 2300W (certificate), 3000W (actual)
Voltage	220-240V~ 50/60Hz or 110-120V~ 50/60Hz
No Load/min <sup>-1</sup>	3900
Linear speed with 16" blade	53.7 m/s
Blade Diameter	405mm(16")
Arbor	25.4mm (1")
Max. Cutting Depth	150mm (6")
Protection Class	Class II, (220V models with PRCD / GFCI)
Dimensions (LxWxH)	660mm x 259mm x 280mm
Weight	9.6 kg (21.1 Lbs), (10.1 kg (22.2 Lbs) with guide rollers)

STANDARD ACCESSORIES

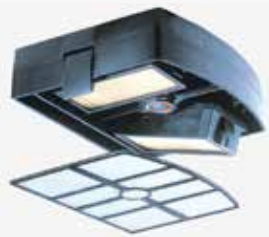
- \* M17 Combination Wrench x1
- \* M3 L-hex wrench x 1
- \* Guide Roller Set x1
- \* Splash Guard Unit x1
- \* Blade Guard Brush x1
- \* PRCD / GFCI Interruptor x1 (220V models only)

OPTIONAL ACCESSORIES

- \* Flush Cutting Flange Kits
- \* Flush Cutting Blade
- \* Dust Skid x1

DE25 & DEP25  
WET/DRY VACUUM DUST  
EXTRACTORS

Purpose-built, 25 liter vacuums to work in conjunction with our power tools. The DE25 has integrated electric switching with tools up to 2200W. The DEP25 has integrated pneumatic switching for air tools. Automatic electromagnetic filter shaker. High output 1200W motor with bypass cooling.



High efficiency, 2-stage filter system

Quick-release catches on dust compartment for convenient clearing of dust. Easy conversion between wet and dry modes

25 Liter Dust Compartment

Lockable rear wheels. Large diameter wheels easily roll across worksite debris and irregularities.

Compact design with optimized balance for ease of movement around the worksite or up and down stairs

Handy cable storage with strap

Blower Port

Large Front Caster Wheels

Front and rear hand-holds for convenient transporting.



Model	DE25	DEP25 (Pneumatic Switching Version)
Power Input	1200W	
Voltage	220-240~ 50-60Hz or 110-120V~ 50-60Hz	
Max. Airflow	4000 l/min (141.3 CFM)	
Max. Suction (lift)	25 kpa (250 mbar, 100.4 inches of water)	
Protection	IP 44	
Max. Dust Capacity	25 L (6.6 gallons)	
Max. Connected Power Tool	2200 W	
Soft Start	With	
Dimensions (LxWxH)	598mm x 408mm x 420mm	
Net Weight	12.9kg (28.44 Lbs)	13.8kg (30.42 Lbs)

- STANDARD ACCESSORIES**
- \* Vacuum Hose ( 4M ) x1
  - \* Pleated Main Filters (pair) x2
  - \* Washable Diaphragm Filter x1
  - \* Cloth Dust Bag with Hook & Loop Closure x1